

salamander

# Data Acquisition Systems: Sentry II Datalogger and Sentry Solo

## Specification

- 8 channel input (or up to 4 digital)
- 15 bit precision
- A variety of Intelisys integrated probes are available
- Accepts any 0-2500mV signal and standard digital inputs
- Real time output can be displayed on PC
- PDA software allows programming and downloading

### Storage capacity

Large 4 Megabit memory allowing up to 32,000 date stamped readings

### Software

The included software package is designed for visualisation of large data sets. Data is also automatically saved as .dif (data interchangeable format) files allowing data analysis in all Windows based statistical packages (e.g. Excel, SPSS).

### Batteries

Non-rechargeable Duracell batteries supplied as standard which will power the datalogger for one year dependent on sampling frequency (based on a 15 minute interval).

Able to power transducers drawing up to a total of 250mA

### Dimensions

115x65x40mm, weight 413g

### Environmental protection

Rated to IP-68

Temperature range from -20°C to 80°C

Miniature high quality, screw fitting, IP68 connectors

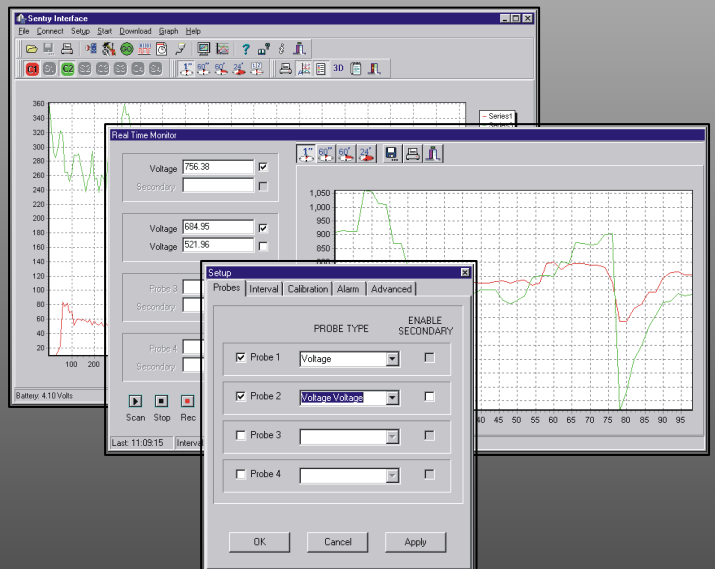


4 input 8 channel  
Sentry II logger

## Miniature size Miniature price



Single Input Dual  
channel Sentry Solo



For further information please contact: Salamander sales

Tel: 0845 053 1234

Fax: 0845 053 1235

[www.salamander-group.co.uk](http://www.salamander-group.co.uk)

[sales@salamander-group.co.uk](mailto:sales@salamander-group.co.uk)